

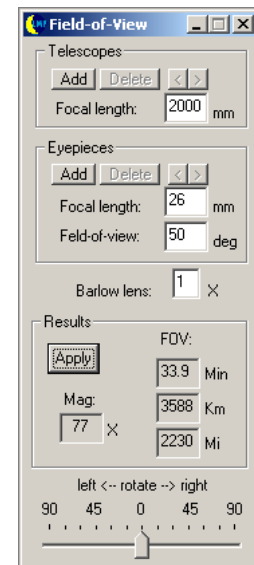
Field-of-View Dialog Enhancements

Description:

All previous operations of the Field-of-View Dialog remain the same, but two new capabilities have been added. First, you can now save both a list of telescopes and a list of eyepieces. Your current defaults are automatically added to these lists, the first time you activate the new dialog. Second, the calculation and display of magnification (upon clicking the "Apply" button) is now accompanied by the size of the field-of-view in arc minutes, kilometers, and miles.

The telescope and eyepiece inputs are now clearly separated into their own groupings. Each grouping contains its own "Add", "Delete", and sequencing buttons, i.e. "<" and ">". Each time you type a new "Focal length" in the "Telescope" grouping, the corresponding "Add" button becomes enabled. Simply click the button to store the new entry. Similarly, each time you type a new "Focal length" or "Field-of-view" in the "Eyepiece" grouping, the corresponding "Add" button becomes enabled. Once again, simply click the button to store the new entry.

A separate list of entries is stored for each grouping, in the order given by you. Once a grouping has at least two entries, the appropriate sequencing buttons become enabled. To step forward through a list, click ">". To step backward, click "<". The ">" button becomes disabled when you reach the end of the list, while the "<" button becomes disabled when you reach the beginning of the list.



The "Delete" button associated with a grouping can be used to remove an entry from the corresponding list. Simply click the button to remove the entry that is currently displayed. The "Delete" button becomes disabled when there are no more entries in the list.

Note: a new entry that has not been added explicitly, i.e., by clicking "Add", is added implicitly if it is applied, or if the dialog is closed.

Installation:

Please read and follow all instructions carefully.

1. Download the patch to the location of your choice.
2. Using Windows Explorer™, go to the directory where the file has been placed.
3. Double-click EnhancedFOVManager.exe (If your computer is not set to show file extensions, you will only see EnhancedFOVManager). This will launch the WinZip Self-Extractor.

4. On the WinZip Self-Extractor Dialog, you will see a text field labeled: "Unzip to Folder." This field contains the default location of the Lunar Map Pro (LMP) software, i.e. C:\Program Files\RITI\Lunar Map Pro 1.0.
5. Do ONE of the following...

CASE 1: If you used the Default Installation Procedure:

- Your computer contains a "Program Files" folder on the C-drive.
- You did NOT specify your own install path when you installed LMP.
- The default location is correct, so just click "Unzip" on the dialog.
- When the installation process completes, you will see a small dialog box that says: "3 file(s) unzipped successfully". Click the "Ok" button.
- Click "Close" on the WinZip Self-Extractor Dialog.
- LMP will be automatically updated, and is ready to use.

CASE 2: If you changed the drive designation to a drive other than C:

- Your computer contains a "Program Files" folder on a different drive.
- You did NOT specify your own install path when you installed LMP.
- Change the C in the text field to the correct drive letter, and then click "Unzip" on the dialog.
- When the installation process completes, you will see a small dialog box that says: "3 file(s) unzipped successfully". Click the "Ok" button.
- Click "Close" on the WinZip Self-Extractor Dialog.
- LMP will be automatically updated, and is ready to use.

CASE 3: If you specified your own install path when you installed LMP:

Type the exact path into the text field, and then click "Unzip". If you do not remember the path, there are several ways to find it. The simplest is as follows:

- ❖ Click the right mouse button on the LMP desktop ICON and move the mouse over "Properties" and click. The Lunar Map Pro Properties Dialog comes up.
 - ❖ On the Lunar Map Pro Properties Dialog, click the "Shortcut" tab.
 - ❖ You will see a text field called "Target:".
 - ❖ Copy the path shown, up to, and including, the path element "Lunar Map Pro 1.0", to the "Unzip to Folder" field on the WinZip Self-Extractor Dialog.
 - ❖ Do NOT copy anything after the 1.0 and, if there is a leading quotation mark, do NOT copy it.
- When you are certain the path is correct, click "Unzip" on the dialog.
 - When the installation process completes, you will see a small dialog box that says: "3 file(s) unzipped successfully". Click the "Ok" button.
 - LMP will be automatically updated, and is ready to use.